

# TIGOR EV - THE ELECTRIC SEDAN

NOW WITH EXTENDED RANGE



**ELECTRIC DRIVES GROWTH** 



Fast charging socket - 0 to 80% in 120 min\*



Piano Black shark fin antenna and LED high mounted stop lamp



Crystal-inspired LED tail lamps



Reliable architecture with cocoon like safety cell



Fast charging socket - 0 to 80% in 120 min\*



Breakfree coupe - inspired roof line



Diamond front grille with chrome humanity line



Stylish alloy wheels (Available in XT only)



Premium black and grey interior theme with automatic climate control



Single speed transmission with sport mode, drives like automatic



Easy home charging from any 220 V 15 A AC socket



Immersive sound experience by Harman™\*\*



Enhanced safety with dual front airbags



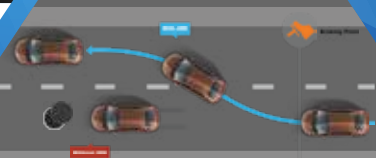
High energy density 21.5 kWh battery for greater driving range - 213 km on single charge#



Premium fabric seats



Chrome ringed instrument cluster with high-resolution, segmented driver information system



ABS with Electronic Brake-force Distribution to optimize braking distance and to ensure vehicle stability on corners

## Tigor EV Extended Range Specification

| Technical Specification                              | XE+   | XM+ | XT+ |
|--|---|-----|-----|
| Vehicle Type   | M1 Category   |     |     |
| Motor  | 72 V 3-Phase AC Induction Motor                               |     |     |
| Emission   | Zero Tailpipe Emission  |     |     |
| Max. Power (kW @ r/min)                              | 30 kW @ 4500 r/min  |     |     |
| Max. Torque (Nm @ r/min)                             | 105 Nm @ 2500 r/min   |     |     |
| Transmission   | Single Speed, Automatic                                       |     |     |
| Tyres  | R14 175/65 Tubeless   |     |     |
| Front Suspension                                     | Independent, Lower Wishbone, McPherson Strut with Coil Spring |     |     |
| Rear Suspension                                      | Semi-Independent; Twist beam with dual path strut             |     |     |
| Front Brakes   | Disc  |     |     |
| Rear Brakes  | Drum  |     |     |
| Turning Radius (m)                                   | 5.1   |     |     |
| Battery Capacity (kWh)                               | 21.5  |     |     |
| Gross Vehicle Weight (kg)                            | 1590  |     |     |
| Wheel base (mm)                                      | 2450  |     |     |
| Overall length (mm)                                  | 3992  |     |     |
| Overall Width (mm)                                   | 1677  |     |     |
| Overall Height (mm)                                  | 1537  |     |     |
| Seating Capacity                                     | 5   |     |     |
| Ground Clearance (mm)                                | 176   |     |     |
| Steering   | Electrically Power Assisted                                   |     |     |
| Gradeability   | 9.8 Deg   |     |     |
| Regenerative Braking                                 | Yes   |     |     |
| AC Charging Standard                                 | BEVC-AC001  |     |     |
| DC Fast Charging Standard                            | BEVC-DC001  |     |     |
| Normal Charging Time (0%-100%)                       | 11.5 hrs*   |     |     |
| Fast Charging Time (0%-80% with 15 kW charger)       | 2 hrs*  |     |     |
| Bootspace (Litres)                                   | 255   |     |     |
| Max Speed (km/h)                                     | 80  |     |     |
| Certified Full Charge range (as per MIDC Cycle) (km) | 213   |     |     |

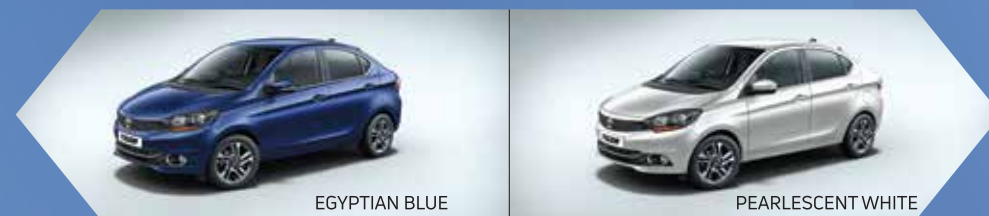
### Feature List

| Safety and Security                          | XE+         | XM+   | XT+        |
|--|-------------|-------|------------|
| Driver Airbag                                | Y           | Y     | Y          |
| Co-Driver Airbag                             | -           | Y     | Y          |
| ABS  | Y           | Y     | Y          |
| Rear parking sensor                          | Y           | Y     | Y          |
| Seat belt reminder - Driver                  | Y           | Y     | Y          |
| Seat belt with pretensioners & load limiters | Y           | Y     | Y          |
| Seat belt for back row passengers            | Y           | Y     | Y          |
| Collapsible steering column                  | Y           | Y     | Y          |
| Side Intrusion beams                         | Y           | Y     | Y          |
| Driver Seat Height Adjustable                | Y           | Y     | Y          |
| 2 Side View Mirror + 1 Rear View mirror      | Y           | Y     | Y          |
| Automatic door lock (While driving)          | -           | Y     | Y          |
| Immobilizer                                  | Y           | Y     | Y          |
| Exterior                                     | XE+         | XM+   | XT+        |
| Chrome Humanity line on front upper grille   | Y           | Y     | Y          |
| LED high mount stop lamps                    | Y           | Y     | Y          |
| Crystal Inspired LED Tail Lamp               | Y           | Y     | Y          |
| Stylish 3 dimensional headlamps              | Y           | Y     | Y          |
| Alloy Wheels                                 | -           | -     | Y          |
| Steel Wheel rims                             | Y           | Y     | -          |
| Bumper                                       | Body Color  |       |            |
| Tubeless Tyre                                | Y           | Y     | Y          |
| Door Handles                                 | Black       | Black | Body Color |
| Front grille with integrated charging port   | Piano Black |       |            |

## Tigor EV Extended Range Specification

| Exterior   | XE+                 | XM+   | XT+        |
|--|---------------------|-------|------------|
| Side turn indicator  | Y                   | Y     | Y          |
| ORVM   | Black               | Black | Body Color |
| Comfort and Convenience  | XE+                 | XM+   | XT+        |
| Multi-drive mode: ECO & SPORT  | Y                   | Y     | Y          |
| Fully automatic temperature control (FATC)   | Y                   | Y     | Y          |
| ePAS with tilt adjustment  | Y                   | Y     | Y          |
| Front wipers: high, low & 5 intermittent speed   | Y                   | Y     | Y          |
| Adjustable front head rests  | Y                   | Y     | Y          |
| Internally adjustable outside mirrors - Manual   | Y                   | Y     | -          |
| Internally adjustable outside mirrors - Electric   | -                   | -     | Y          |
| 4 Door power windows   | -                   | Y     | Y          |
| Driver side up/down & all window control   | -                   | Y     | Y          |
| Remote Entry Fob   | -                   | -     | Y          |
| Sunvisor   | Y                   | Y     | Y          |
| Roof Lamp  | Y                   | Y     | Y          |
| Integrated Stereo with AM/FM, USB, AUX-IN, iPod, Bluetooth Connectivity by HARMAN™   | -                   | Y     | Y          |
| Floor Console  | Y                   | Y     | Y          |
| Interior   | XE+                 | XM+   | XT+        |
| Bottle & cup holder in front console   | Y                   | Y     | Y          |
| Premium black and grey interior theme  | Y                   | Y     | Y          |
| Door pockets with bottle holder  | Y                   | Y     | Y          |
| Tablet storage space in glove box  | Y                   | Y     | Y          |
| Gear knob with chrome insert   | Y                   | Y     | Y          |
| Front power outlet   | Y                   | Y     | Y          |
| Collapsible grab handles   | Y                   | Y     | Y          |
| Instrument Cluster   | XE+                 | XM+   | XT+        |
| Segmented DIS display 6.35 cm (2.5")   | Y                   | Y     | Y          |
| Driver information system with digital clock, gear shift display, trip meter (2 nos.), trip average fuel efficiency, distance to empty | Y                   | Y     | Y          |
| Door open & key in reminder  | Y                   | Y     | Y          |
| Warranty   |                     |       |            |
| Vehicle Warranty   | 3 years/1,25,000 km |       |            |
| Battery Warranty   | 3 years/1,25,000 km |       |            |

\*25 +/- 2 degrees ambient and battery temperature. \*\*Harman™ is a registered trademark. #As per MIDC Cycle.## Terms & Conditions Apply.



EGYPTIAN BLUE

PEARLESCENT WHITE

TAKE A TEST DRIVE TODAY.  
SMS "TIGOREV" to **5616161**

Toll free number  
**1800 209 8282**

Accessories shown in pictures and features mentioned in the text may not be a part of the standard equipment. The contents are not binding and are subject to change without prior notice. These are indicative specifications for reference only. All features are not available in all variants and may vary for different variants. Colours may not match the actual colours due to printing limitations. Images of the car may not exactly represent vehicle on sale.

Find us at: [www.tigor.tatamotors.com/electric](http://www.tigor.tatamotors.com/electric)

[f /tatamotorsgroup](https://www.facebook.com/tatamotorsgroup) | [/tatamotors](https://www.instagram.com/tatamotors) | [/tatamotorsgroup](https://www.youtube.com/tatamotorsgroup)

Tata Motors Passenger Vehicle Business Unit, Tata Motors Limited, 4th floor Ahura Centre, Mahakali Caves Road, MIDC, Andheri (East), Mumbai 400093.